



Study of an ESA Space Weather Programme

Mike Hapgood

CLRC Rutherford Appleton Laboratory

M.Hapgood@rl.ac.uk



WHO ARE WE?

- Central Laboratory of the Research Councils (CCLRC)
 - Space Science & Technology Department (at RAL)
- UK Defence Evaluation and Research Agency (DERA)
 - Space Department (Farnborough)
 - Radio Science and Propagation Group (Malvern)
- Astrium, UK
- Finnish Meteorological Institute (FMI)
- Office National d'Etudes et de Recherches Aérospatiales
 - Département Environnement Spatial (ONERA-DESP)
- Belgian Institute for Space Aeronomy (BIRA)



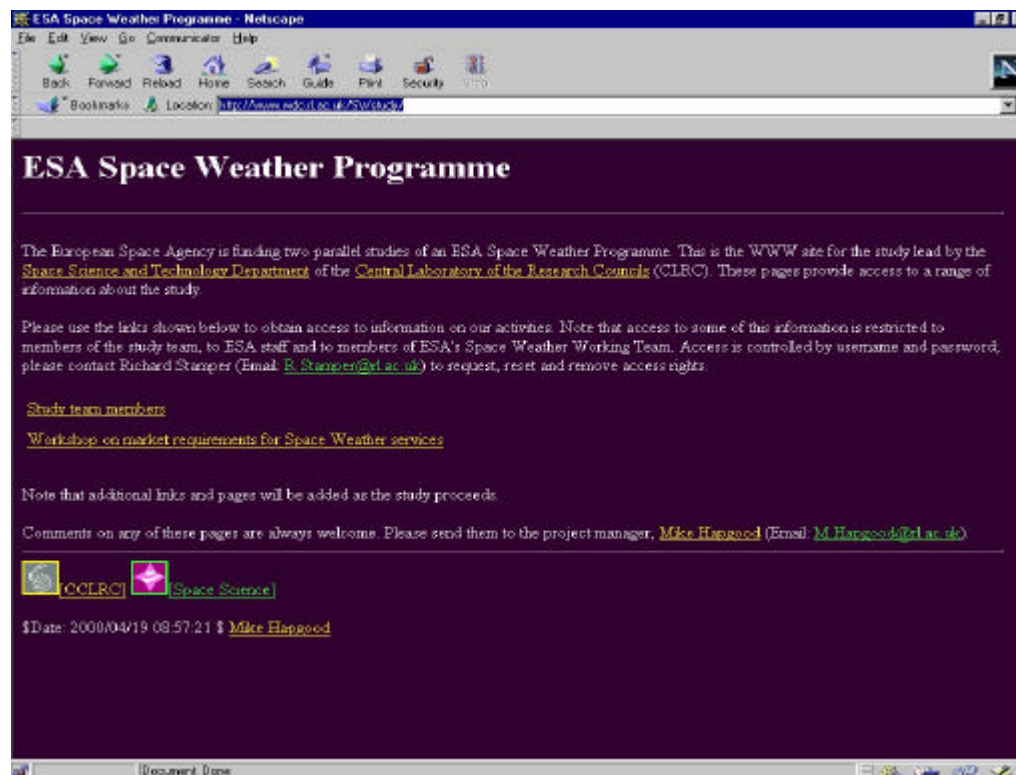
KEY PEOPLE

- CCLRC - Mike Hapgood
- DERA - Lesley Murphy
- Astrium - Martyn Snelling
- FMI - Hannu Koskinen
- ONERA/DESP - Daniel Boscher
- BIRA - Daniel Heynderickx



STUDY WEB SITE

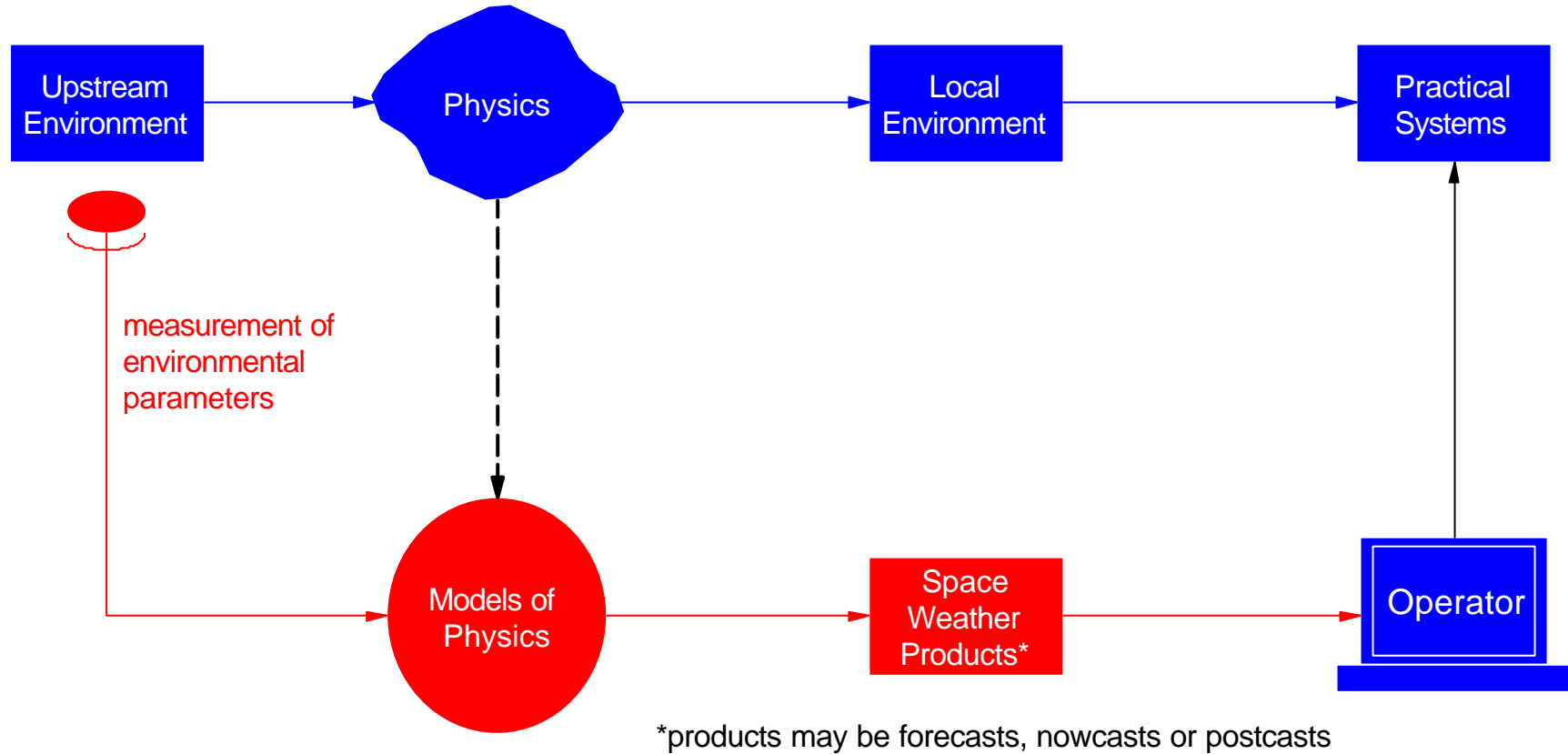
<http://www.wdc.rl.ac.uk/SWstudy/>



Workshop on Utilisation of a Future European Space Weather System, ESTEC, 12 Dec 2000

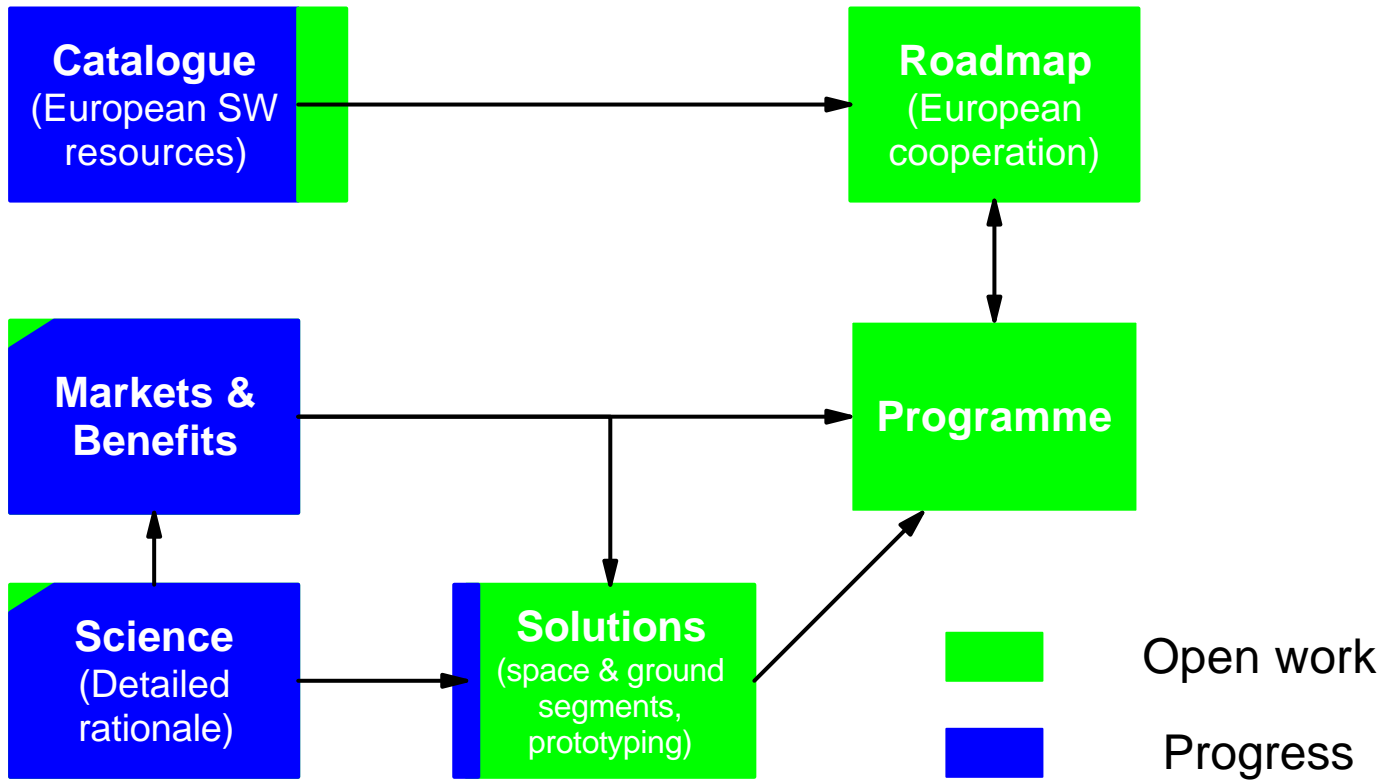


CONCEPTUAL S.W. SYSTEM





STUDY FLOW





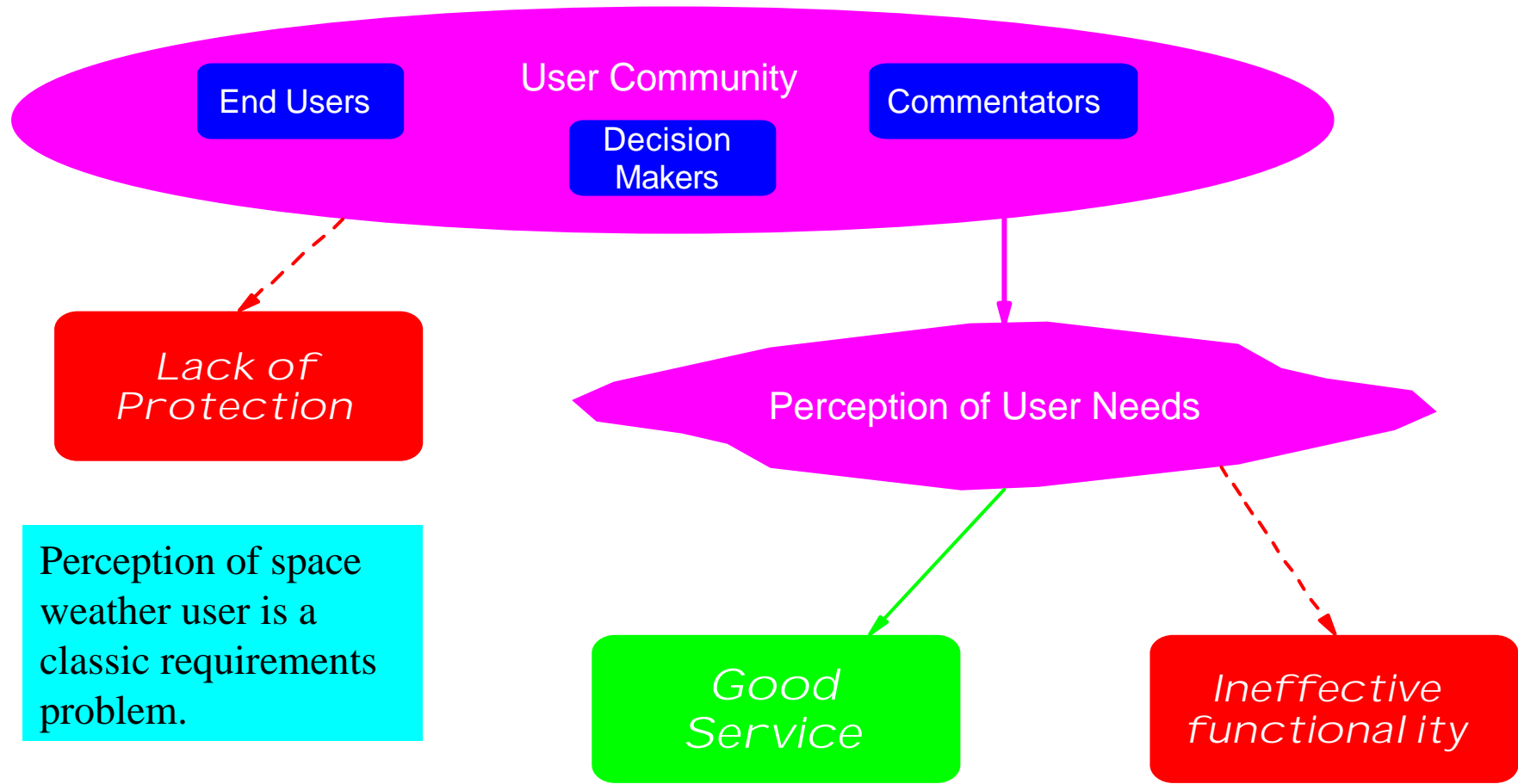
AIM FOR TODAY

IMPROVING UNDERSTANDING OF USER REQUIREMENTS

Workshop on Utilisation of a Future European Space Weather System, ESTEC, 12 Dec 2000

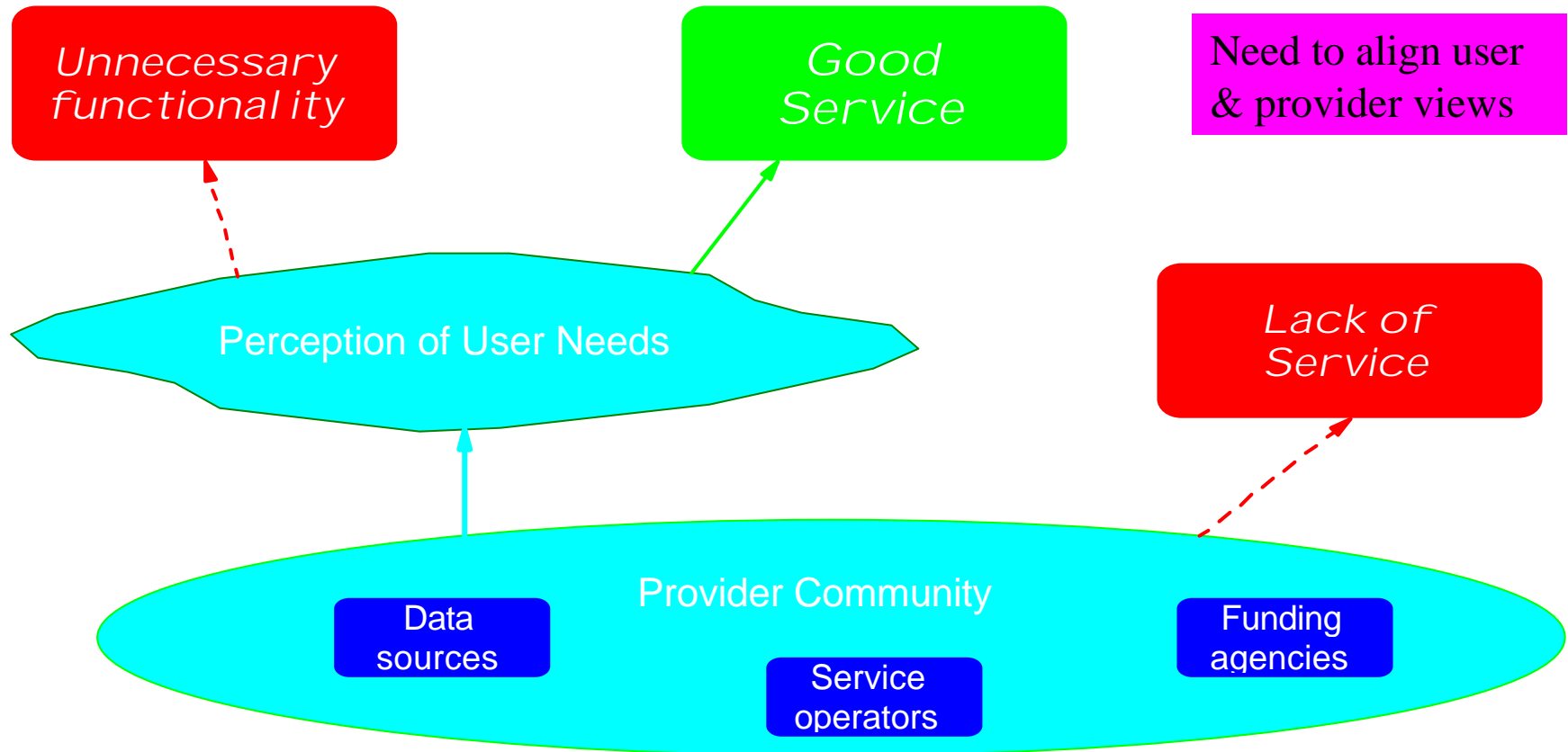


USER VIEW OF NEEDS





PROVIDER VIEW OF NEEDS





SOME THOUGHTS

- Strengths

- Science & measurements
- History of collaboration
- Micro/nanosat programmes
- Geographic spread of facilities

- Weaknesses

- Access to small launchers
- Provision of services is fragmented (dates from IGY 1957)

- Opportunities

- Collaboration with US, Japan & others
- SMEs as service providers
- Niche areas for services
- Focus for research

- Threats

- US competition
- Bandwagon for other interests